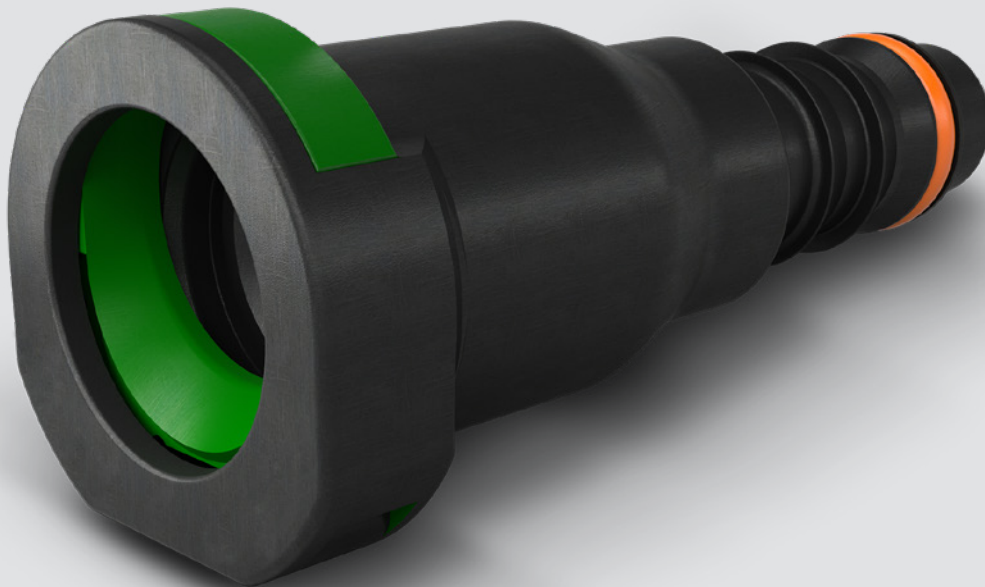


NORMAQUICK® SR Single-Lock

oep
ORIGINAL EQUIPMENT PARTS




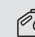
Connection of media-carrying lines in vehicles


- ✓ Used as original equipment in vehicles of major manufacturers such as VW Group, PSA Group, Renault, Chrysler, Ford, GM and Fiat
- ✓ Chamfer feature locks the retainer under pressure, making the connection highly reliable
- ✓ Audible indicator ("click") confirms locking of the adapter


 Air Intake & Induction

 Exhaust Systems

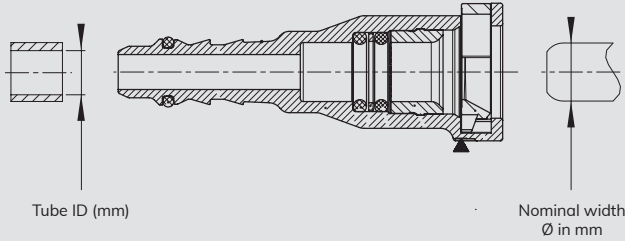
 Cooling Systems

 Fuel & Oil Systems

 Turbocharger Installations

 Fixing & Retaining

NORMAQUICK® SR Single-Lock



SR = Safety Regulated

Applications

Single-Lock connectors are an ideal means of connecting fuel lines. They are designed to meet SAE J2044 standards. Ø 13 mm is used for crankcase ventilation systems.

Materials

Housing:	PA12-GF30 (Ø 7.89 mm to 10.00 mm) and PA66-GF30 (Ø 13.00 mm)
Retainer:	PA12-GF30
O-ring:	FKM + FVMQ

Part number	Description	Nominal width (mm)	Packaging quantity (pcs)
A614A50-06M04	Single-Lock - Ø 7.89 mm - tube ID 6.00 mm - 0°	7.89	100
A624E50-06M04	Single-Lock - Ø 7.89 mm - tube ID 6.00 mm - 90°	7.89	100
A610R08-06M02	Single-Lock - Ø 8.00 mm - tube ID 6.00 mm - 0°	8.00	100
A620N08-06M02	Single-Lock - Ø 8.00 mm - tube ID 6.00 mm - 90°	8.00	100
A613A53-08M02	Single-Lock - Ø 9.49 mm - tube ID 8.00 mm - 0°	9.49	100
A623C53-08M04	Single-Lock - Ø 9.49 mm - tube ID 8.00 mm - 90°	9.49	100
A614-52-08M01	Single-Lock - Ø 9.89 mm - tube ID 8.00 mm - 0°	9.89	100
A624-52-08M01	Single-Lock - Ø 9.89 mm - tube ID 8.00 mm - 90°	9.89	100
A610M10-08M02	Single-Lock - Ø 10.00 mm - tube ID 8.00 mm - 0°	10.00	100
A620N10-08M02	Single-Lock - Ø 10.00 mm - tube ID 8.00 mm - 90°	10.00	100
9615 13 10M05	Single-Lock - Ø 13.00 mm - tube ID 8.00 mm - 0°	13.00	100
9625 13 10M05	Single-Lock - Ø 13.00 mm - tube ID 8.00 mm - 90°	13.00	100

Tube ID: Inner diameter of the PA tube. Nominal width: Outer diameter of the connecting adapter piece.

More benefits

- ✓ Compact design allows for assembly in narrow spaces
- ✓ Zero leakage
- ✓ No assembly tool required

NORMAQUICK® SR Single-Lock is part of a broad portfolio. Discover more!



S



Fuel Line Repair Kit



Do you have questions or require a personal consultation?
Feel free to contact our Automotive Aftermarket Team! Hotline +44 1635 574 005
Visit our website for more information about our Automotive Aftermarket products: norma-aftermarket.com

